



Eddie Bauer® Ladies Full-Zip Microfleece Jacket EB225



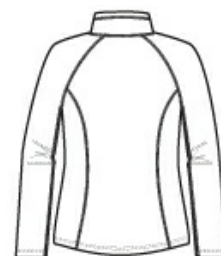
Warmth and comfort—without the bulk. With flatlock stitching throughout, this lightweight, versatile jacket is cozy on its own or layers easily under a jacket when it's cold. Reverse coil zippers, front zippered pockets, open cuffs and an open hem. Princess seams, contrast Eddie Bauer logo embroidered on hem. Made of 100% polyester microfleece with an anti-pill finish.

CARE INSTRUCTIONS

Machine wash cold. Only Non-chlorine bleach when needed. Tumble dry low. Cool iron on reverse side if necessary.

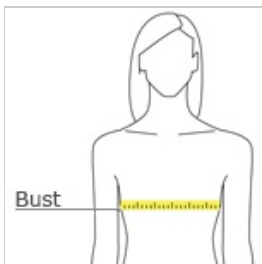


front



back

HOW TO MEASURE



BUST

With arms down at sides, measure around the upper body, under arms and around the fullest part of the bust.

SIZE CHART

	XS	S	M	L	XL	2XL	3XL	4XL
Size	2	4/6	8/10	12/14	16/18	20/22	24/26	28/30
Bust	32-33	34-35	36-37	38-40	41-43	44-46	47-49	50-52

COLOR INFORMATION

				
Black PMS NTR BLACK CPMS 76 48 C	Deep Magenta PMS 7540 C	Grey Steel PMS 533 C	Navy PMS 746 8 C	Peak Blue PMS 746 8 C